



MANUAL KONFIGURASI EMEL (*mod.gov.my*) PADA TELEFON PINTAR

(ANDROID)

Version 7.0

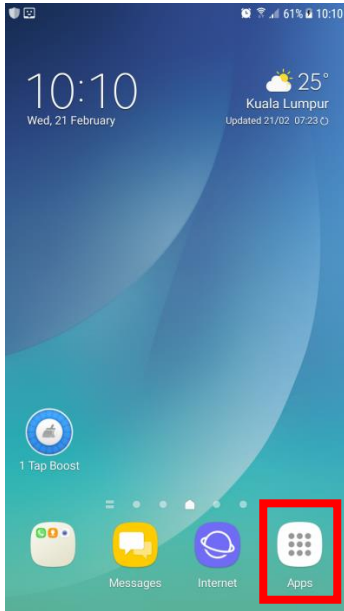
FEBRUARI 2018

DISEDIAKAN OLEH

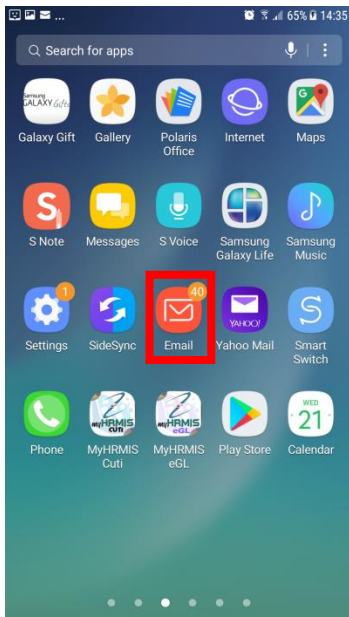
**CAWANG APLIKASI
MTU - KOMLEK**

Arahan untuk mengkonfigurasi e-mel mod.gov.my ke dalam Telefon Pintar Android.

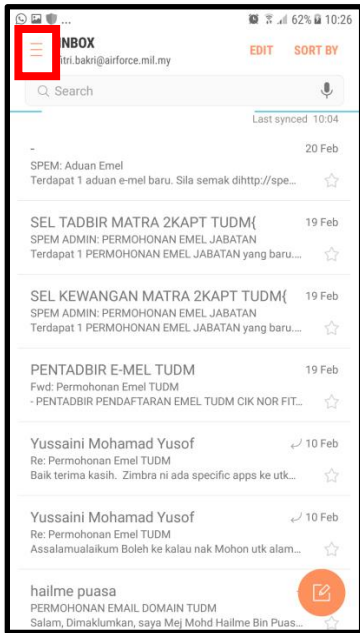
1. Home Screen → Apps



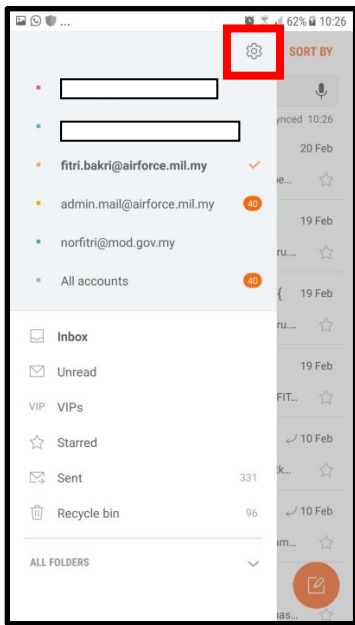
2. Apps → Email



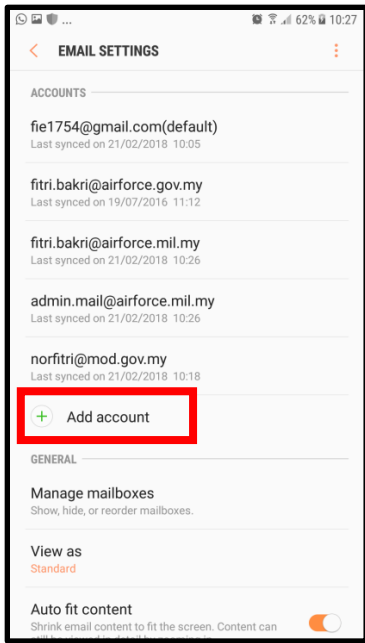
3. Tap pada ikon **Menu** ☰



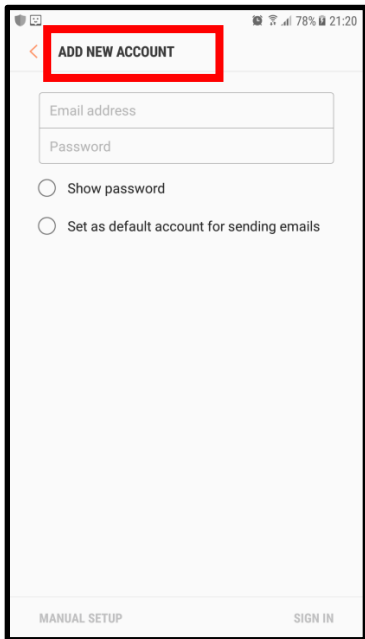
4. Tap pada ikon **Setting** ⚙️



5. Pilih **Add account**



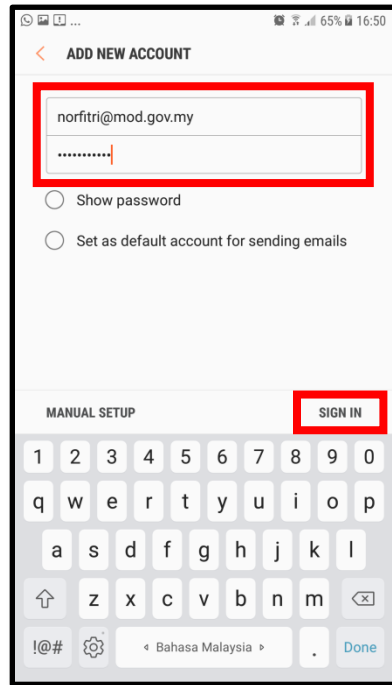
6. Skrin **ADD NEW ACCOUNT** akan dipaparkan



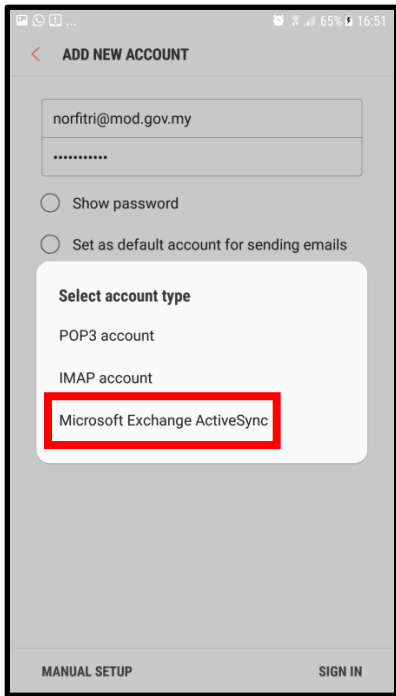
7. Masukkan data seperti berikut:

- a) Alamat e-mel @mod.gov.my
- b) Katalaluan

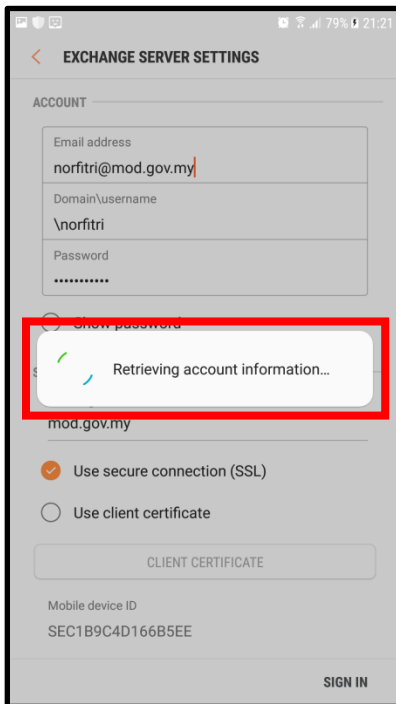
Kemudian tab pada butang **SIGN IN**



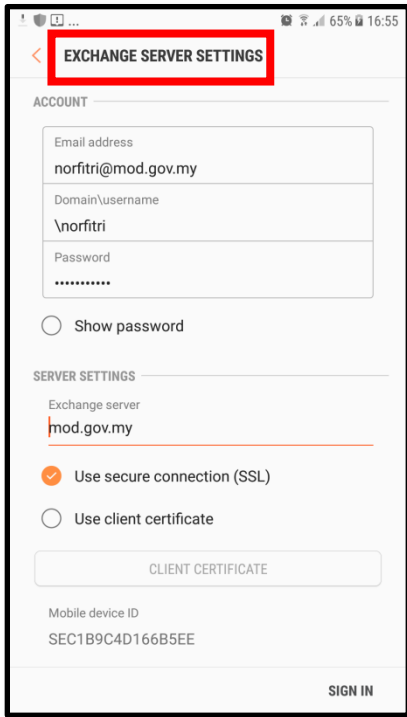
8. Skrin **Select account type** akan dipaparkan
Tab pada **Microsoft Exchange ActiveSync**



9. Tunggu sehingga proses maklumat akaun e-mel diperolehi selesai.



10. Setelah selesai, skrin **EXCHANGE SERVER SETTINGS** akan dipaparkan.



11. Masukkan data seperti berikut:

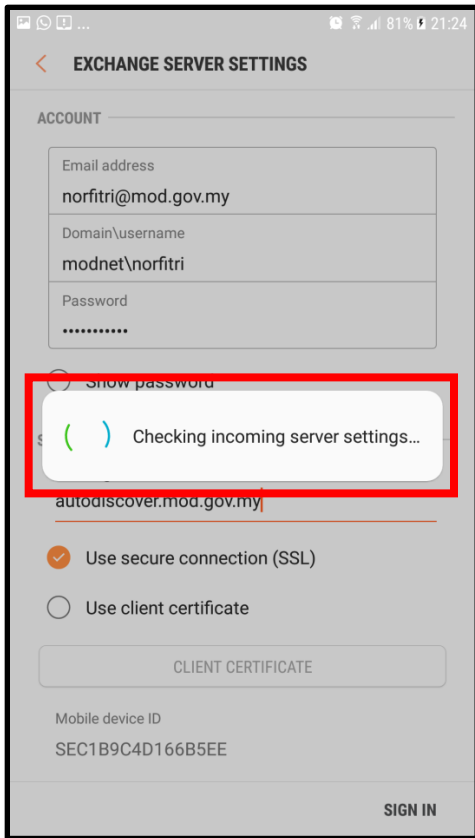
- a) Domain\username: **modnet\username e-mel anda**
- b) Exchange Server: **autodiscover.mod.gov.my**

Pastikan Use secure connection (SSL) dipilih

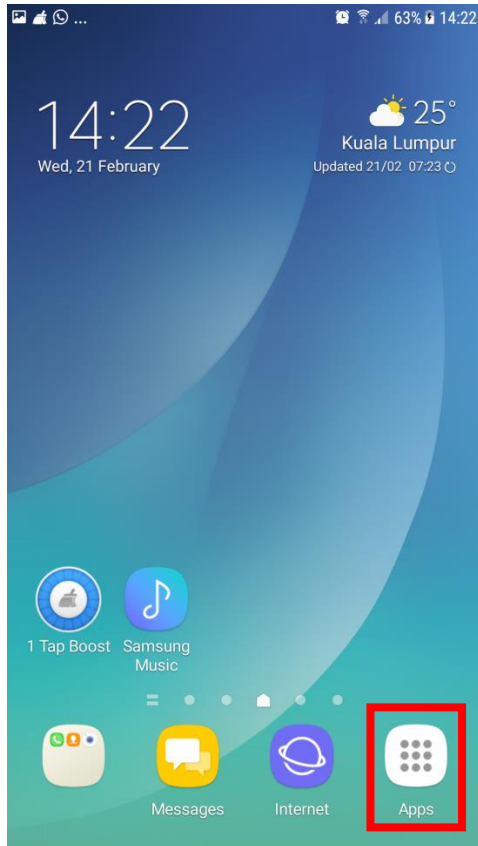
Kemudian tab pada butang **SIGN IN**

The screenshot shows the 'EXCHANGE SERVER SETTINGS' screen. Under the 'ACCOUNT' section, the 'Email address' is 'norfitri@mod.gov.my', the 'Domain\username' is 'modnet\norfitri', and the 'Password' is masked with dots. There is a 'Show password' option. Under the 'SERVER SETTINGS' section, the 'Exchange server' is 'autodiscover.mod.gov.my'. The 'Use secure connection (SSL)' option is selected with a checked radio button, while 'Use client certificate' is unselected. A 'CLIENT CERTIFICATE' button is present. At the bottom, the 'Mobile device ID' is 'SEC1B9C4D166B5EE' and a 'SIGN IN' button is highlighted with a red box.

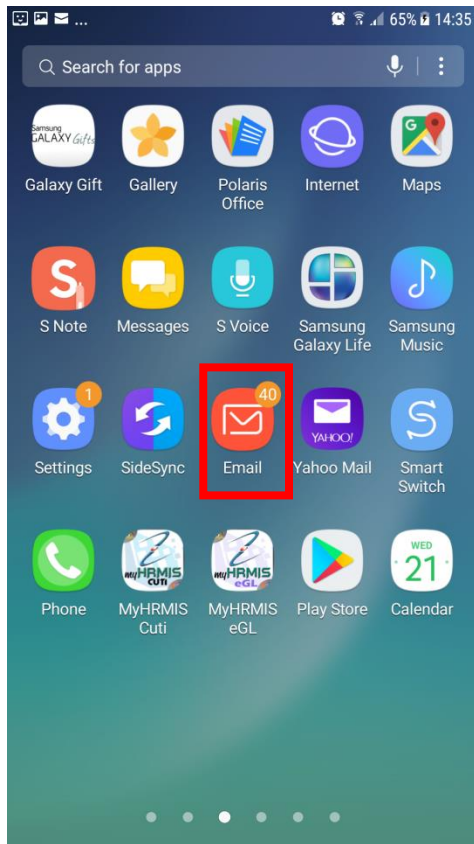
12. Tunggu sehingga pemeriksaan pelayan (*server*) selesai.



13. Kembali kepada paparan utama telefon anda, klik **Apps**.



14. Apps → Email



15. Kemudian e-mel beserta kandungannya akan dipaparkan dan boleh diakses seperti dibawah.

